

Sentinel SuperPro Version 6.5.0 (Windows) Release Notes

This document contains a summary of the new features and installation details for Sentinel SuperPro™ version 6.5.0.

Overview

Sentinel SuperPro protects your applications from unauthorized use across both the stand-alone and networked environments. The SuperPro software protection is empowered by a programmable hardware key that can encrypt data—providing you with a wide range of methods for securing multiple applications per key.

New Features in This Release

The section below summarizes the new features for Sentinel SuperPro version 6.5.0. For complete information, see the *Sentinel SuperPro Developer's Guide*.

Note: If the license code is generated with Sentinel SuperPro 6.5.0 Toolkit, you must send the SSP 6.5.0 Field Exchange Utility and *usafe32.dll* to your end users.

Support for Windows Vista

- The 32-bit SDK installer can be run on Microsoft Windows 98/ME/2000/XP (32-bit and x64)/Server 2003(32-bit and x64)/Vista (32-bit and x64).
- Sentinel System Driver (SSD consists both Parallel and USB) is supported on Windows 98/ME/2000/XP (32-bit and x64)/Server 2003 (32-bit and x64)/Vista (32-bit and x64).
- Sentinel System Driver for USB Keys is Microsoft Windows Hardware Quality Labs (WHQL) certified for Windows 2000, XP (32-bit and x64), Server 2003 (32-bit and x64), Vista (32-bit and x64).
- Sentinel Protection Server is supported on Windows 98/ME/2000/XP (32-bit and x64)/Server 2003 (32-bit and x64) and Vista (32-bit and x64).

Support for AutoCAD 2007 Interface

The Sentinel SuperPro 6.5.0 release supports the AutoCAD 2007 Interface.

SuperPro Shell Enhancement

The new Shell for SuperPro provides enhanced protection against security attacks. Following are the major features added into SSP Shell:

1. Multi-layered Shell
2. Strong Anti-debugging and Anti-disassembly techniques
3. Anti-dumping mechanisms
4. Shell SDK
5. Disk File and Image File integrity checks
6. Support for .NET DLLs
7. Enhanced security for .NET applications
8. Support for Windev, Authorware, LabView applications
9. Support for signing of Shelled .NET applications

Note: For complete information, see the *Sentinel SuperPro Developer's Guide*.

Added a New API Function - *RNBOsproCheckTerminalService*

The RNBOsproCheckTerminalService API is added into all the interfaces of the Sentinel SuperPro Client Library.

■ RNBOsproCheckTerminalService

The function allows you to enable/disable the checking on terminal clients while RNBOsproFindFirstUnit, or RNBOsproFindNextUnit API is executed.

This function shall be called before RNBOsproFindFirstUnit if the user wants to enable the support for Terminal Client.

Enhanced Client Library

- Provision of 64-bit Client Library in Superpro 6.5.0
- The addition of the RNBOsproCheckTerminalService API is an enhancement to the dual-client library:
 - to support terminal client service (#WT83012), and
 - solve the symbol conflicts with UltraPro (#WT80425).

Sentinel USB Driver is WHQL Certified

Sentinel System Driver for USB Keys is Microsoft Windows Hardware Quality Labs (WHQL) certified for Windows 2000, XP (32-bit and x64), Server 2003 (32-bit and x64), Vista (32-bit and x64).

Unsupported Platforms

The following platforms are no longer supported by the Sentinel Superpro version 6.5.0:

- Novell Netware
- Windows 95
- Windows NT

Known Issues

License is not released when only .NET dlls are protected.

Enhancements and Problems Corrected in This Release

The following problems are fixed that existed in the Sentinel SuperPro 6.4 release:

- Earlier, the DLLs compiled using Visual Studio 2005 were not working after shelling. This was due to issues with MFC DLL. This problem has been corrected in this release.
- Earlier NSP_HOST environment variable was ignored, when shelled application was executed in ALL Mode.
Shell module is modified to enhance server discovery method. Modified shell allows user to specify server machine IP address or NetBIOS computer name using NSP_HOST environment variable. User [End user] can specify his server IP address to minimize server discovery delays.
- Time tampering was not handled in the previous Shell DLL. Shell provided with this release handles the time-tampering issues.
- Earlier, an application protected using Shell displayed the “Hardware key not found” error message when the SuperPro key was plugged-out during the run time. The application did not respond, even if the **Retry** button was clicked after attaching the key again. This problem has been corrected in this release.
- Earlier, the shelled *Fujitsu Fortran* executable used to throw an error: “It is not a valid Win 32 application.” The current versions support the shelled *Fujitsu Fortran* executable,
- When shell was applied to the Macromedia Director MX2004 program, issues appeared if any file was added in “Add additional file for encryption”. This problem has been corrected in this release.
- Earlier, the SuperPro SDK 6.4.3 did not display an error message when the License Generator Utility was used with no key connected to the machine. This problem has been corrected in this release.
- The cell addresses were repeated under **Field Activation** tab when trying to add an action and if the cell address from second or third set was selected while generating the License Code, it used to give an error “invalid address”. This problem has been corrected in this release.
- Earlier, the action commands defined beyond 64 cells were not able to update the key through field exchange. This problem has been corrected in this release.
- The Remote Access limitation in SSP Toolkit and stand-alone utilities has been removed.
- The Client Activator was displaying a wrong error message of “EAccessViolation” in an activator error window on running multiple instance of *.rac* file. This problem has been corrected in this release and an error message “You can run only one instance of the program”, is displayed now on running multiple instance of *.rac* file.

Installation

This section contains all the details regarding the Sentinel SuperPro 6.5.0 installation.

System Requirements

Note that the following requirements are necessary:

| Hardware Requirements | Software Requirements |
|---|--|
| <ul style="list-style-type: none"> <input type="checkbox"/> Processor Pentium II or above (450 MHz or above) <input type="checkbox"/> Monitor and its Settings VGA Monitor <input type="checkbox"/> Hard Disk Space 170 MB free hard disk space <input type="checkbox"/> RAM 64 MB RAM <input type="checkbox"/> Peripherals A USB port or a parallel port to attach the hardware key <input type="checkbox"/> Disk Drive CD-ROM drive | <ul style="list-style-type: none"> <input type="checkbox"/> Operating System Windows 98SE/ME/2000/XP (32-bit and x64)/ Server 2003 (32-bit and x64)/Vista (32-bit and x64). <input type="checkbox"/> Web Browser Internet Explorer 5.0 or higher to view the Help files <input type="checkbox"/> PDF File Viewer Adobe Acrobat 4.0 or higher to view the doc- umentation in PDF. |

Upgrade Information for 6.4 Developers

The developers using Sentinel SuperPro version 6.4 must note the following information:

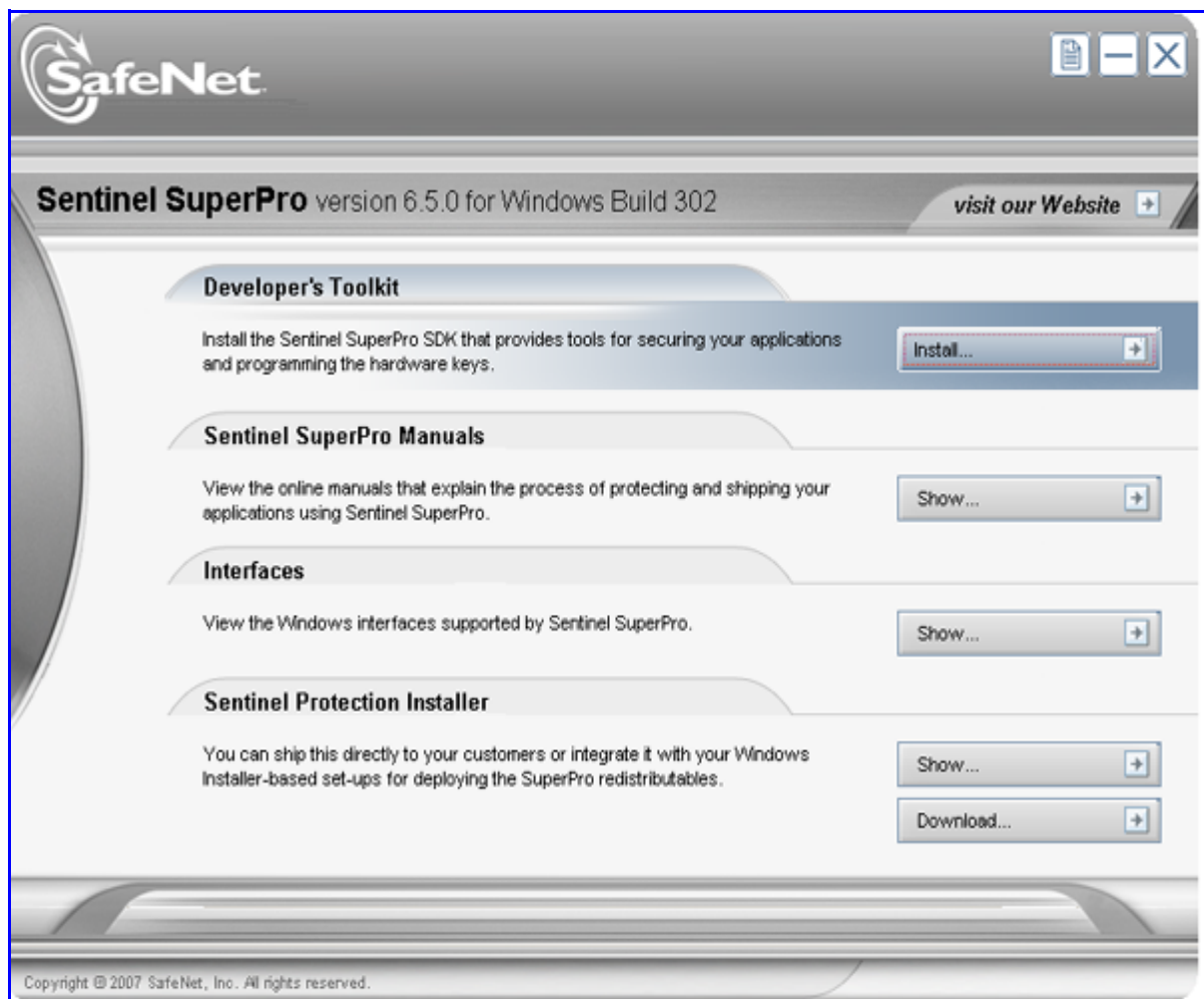
- Sentinel SuperPro 6.5.0 can co-exist with previous versions of Sentinel SuperPro. However, the Sentinel System Driver and Sentinel Protection Server will be upgraded. These components are backward-compatible and are now installed at the following path on a Windows system:
 - Sentinel System Driver**
On a 32-bit system: <OS Drive>:\Program Files\Common Files\SafeNet Sentinel\Sentinel System Driver
On a 64-bit system: <OS Drive>:\Program Files(x86)\Common Files\SafeNet Sentinel\Sentinel System Driver.
 - Sentinel Protection Server**
On a 32-bit system: <OS Drive>:\Program Files\Common Files\SafeNet Sentinel\Sentinel Protection Server
On a 64-bit system: <OS Drive>:\Program Files(x86)\Common Files\SafeNet Sentinel\Sentinel Protection Server.
- If you have upgraded from Windows 9x (Windows 95/98/ME) to Windows NT-based OS (Windows 2000/XP/2003/Vista), you must first uninstall Sentinel SuperPro using its set up executable included on the installation CD (and not through the **Add/Remove Programs** option in **Control Panel**) before installing Sentinel SuperPro 6.5.0.

Installation Instructions

1. Insert the installation CD in the CD drive.
2. You may need to navigate into the CD if the autorun does not work. Double-click *StartHere.exe*. The **StartHere** screen (shown below) appears.
3. Click the **Install** button to launch the setup program. Follow the on-screen instructions to complete the Sentinel SuperPro installation.

Note: The installer upgrades the Windows Installer version to 2.0

Sentinel SuperPro installation requires Windows Installer version 2.0 or higher on the target system. If a lower version is found, the installer will inform the user and upgrade automatically. If you are not sure you want to update the Windows Installer, do not run this program.



The StartHere Screen for Sentinel SuperPro Installation

List of Installed Components

The following components will be installed at: <OS Drive>\Program files\SafeNet Sentinel\SuperPro\6.5 on Windows 32-bit platforms (On Windows 64-bit platforms these components are installed at: <OS Drive>\Program Files(x86)\SafeNet Sentinel\SuperPro\6.5), when you have installed Sentinel SuperPro using the **Complete** setup type.

Installation Directory Structure

| File/Folder Name | Description |
|--------------------------------|--|
| \Configuration File Template | Contains the configuration file for your customers. |
| \Interfaces | Contains client library interfaces for popular compilers, such as Microsoft Visual C++, Visual Basic, COM, .NET and so on. Refer to the directory for details. |
| \Manuals | Contains various documentation items for this release. Please note that the documentation provided in this directory may not be accessible from the Toolkit or any other utility. Hence, we suggest you to access them directly from this location. |
| \MSVCDDev | Contains a sample program, header file, and libraries for Microsoft Visual C++. |
| \Safe Sample | Contains an example for customizing the SAFE program for field activation. |
| \Sentinel Client Activator | Contains Sentinel Client Activator files, including its complete documentation. |
| \Sentinel License Monitor | Contains the source code (.java and .class files) for modifying Sentinel License Monitor. |
| \Sentinel Protection Installer | Contains a ready-to-ship installer for deploying Sentinel System Driver and Sentinel Protection Server. This directory also contains the merge modules and MSI for both components that you can use for customizing their installation. |
| \Tools | Contains the SuperPro Toolkit and other stand-alone applications (like the Field Exchange Utility). This location will also contain the DSAFE and USAFE objects generated for the field activation. |